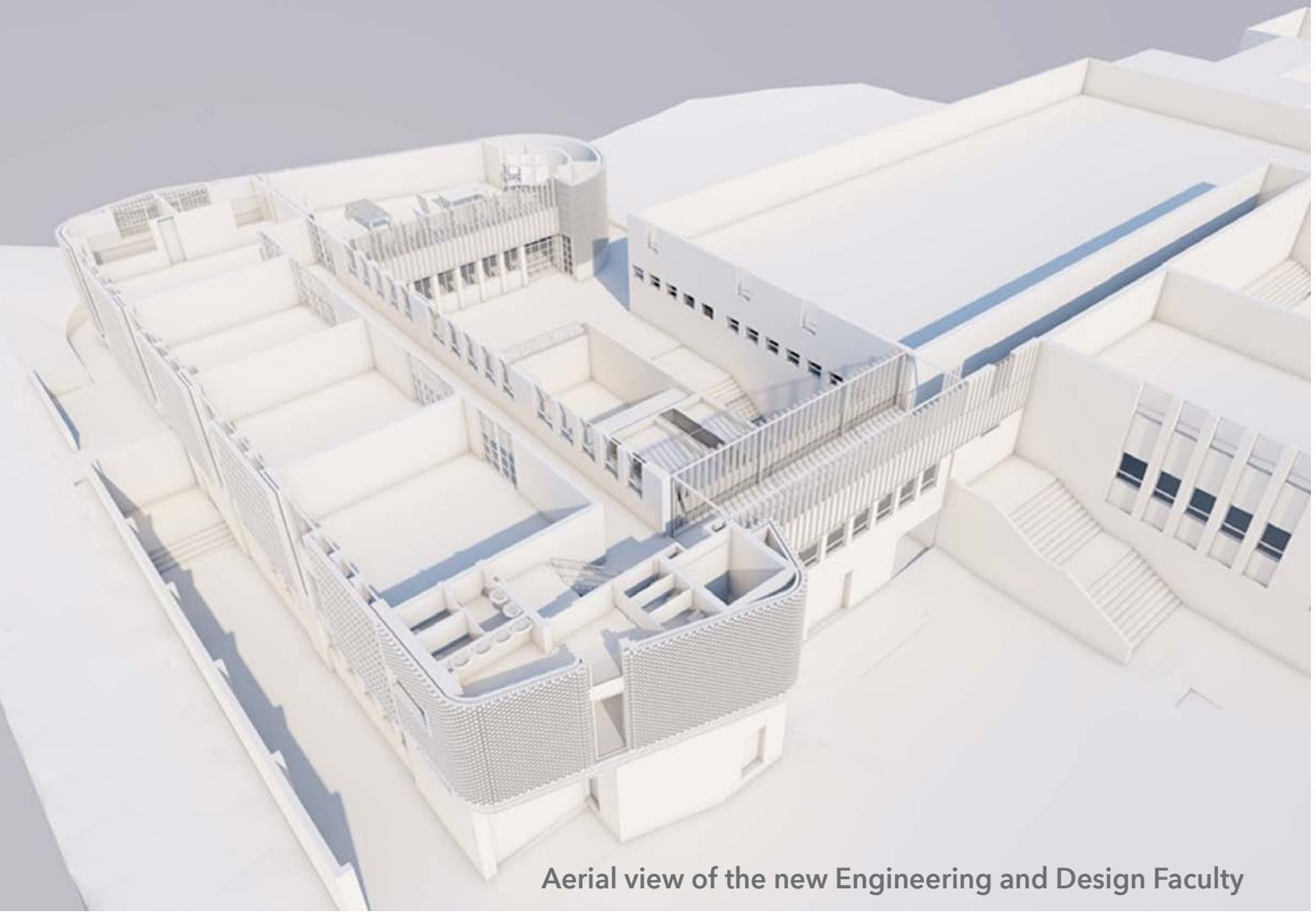




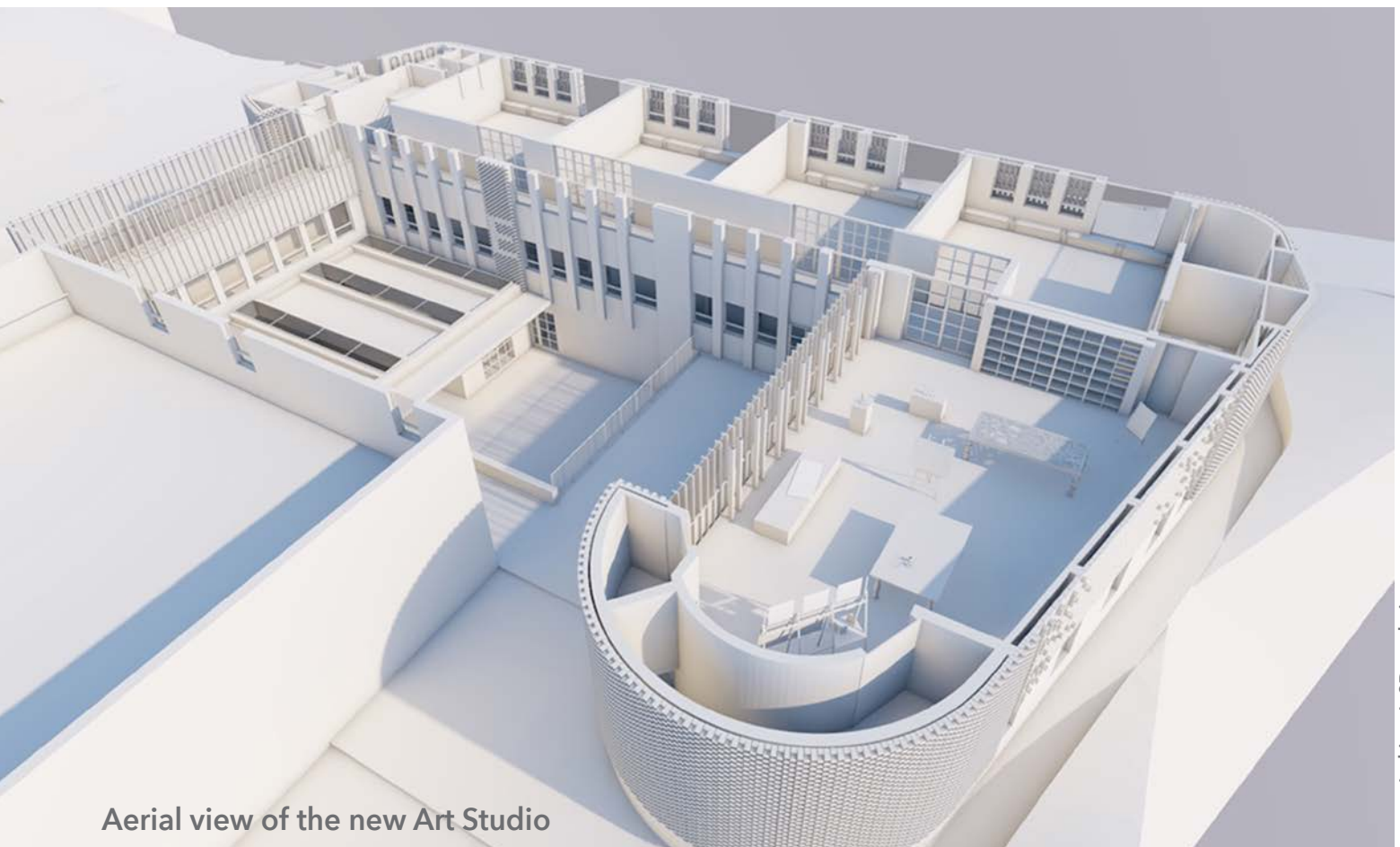
FUNDING PROPOSAL

ENGINEERING AND DESIGN FACULTY

WYNBERG BOYS' HIGH SCHOOL



Aerial view of the new Engineering and Design Faculty



Aerial view of the new Art Studio

CONTENTS



Project Overview	2
Introduction	3
Transformation at Wynberg	4
Proposed Campus Upgrades	5
Capital Works Projects	5
Engineering and Design Stream	5
The Department of Visual and Creative Arts	6
Project Costings	8
Phase 1 and 2 summary	8
Phase 1: Lower Ground Floor	8
Phase 2: 1st Floor	9
Phase 2: 2nd Floor	9
Phase 2: Roof/Overview	9
Implementation Plan	10
How To Get Involved / Donor Recognition	10
Supera Moras Trust and Tax Deductability of Donations	11
Conclusion	11
Banking Details	11
Contact Details (back cover)	12

PROJECT OVERVIEW



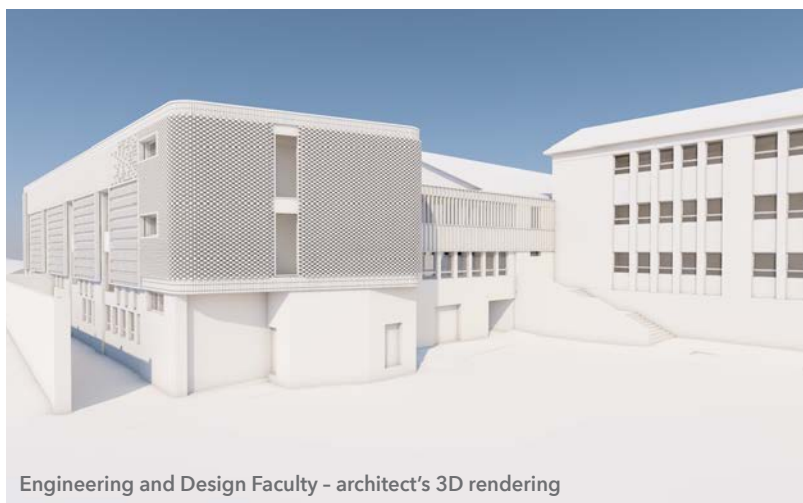
Introducing Wynberg Boys' High School's Engineering and Design Faculty development: a new wing to accommodate Technology and Technical subjects, incorporating the Visual and Creative Arts Departments.

The building is the first in a series of capital works projects identified by the school executive to cater for cutting edge teaching spaces in preparing our students for the Fourth Industrial Revolution.

Where the school has set long term plans to improve upon our magnificent facilities enabling Wynberg to remain at the forefront of modern technologies in the classrooms, additional funding is essential. For this project we have secured several large donations but still require funding to complete the phases outlined under '**Costings**' in this proposal.

This proposal serves to source funds to build additional classrooms and workshops to help us cope with increased numbers and complete proposed upgrades in line with the Western Cape Education Department (WCED) **Guidelines for the Implementation of Technology and Technical Subjects.**

The diagrams on the right give an overview of the proposed build and the two phases.



Engineering and Design Faculty - architect's 3D rendering

PHASE 1 | Lower Ground Floor (completed)



PHASE 2 | Ground, 1st Floor and Roof



SCOTT + PARTNERS
WBHS | ENGINEERING & DESIGN FACULTY



Engineering and Design Faculty

INTRODUCTION



Wynberg Boys' High School is a traditional, values-based boys' school that mentors young men by providing a wide range of educational opportunities in a stimulating, innovative and challenging environment.

While one of the oldest schools in the country, we pride ourselves on remaining at the forefront of education both in the use of technology and teacher development. Understanding that technology cannot replace quality teachers, Wynberg emphasises best practice toward academic excellence, particularly in Mathematics and Science. Steeped in tradition but passionate about progress, Wynberg is respected nationally as a leading, relevant, transformative school. Proudly South African and committed to our community, Wynberg thrives on respect for diversity in a supportive brotherhood fueled by the spirit of our school motto Supera Moras, 'never give up'.

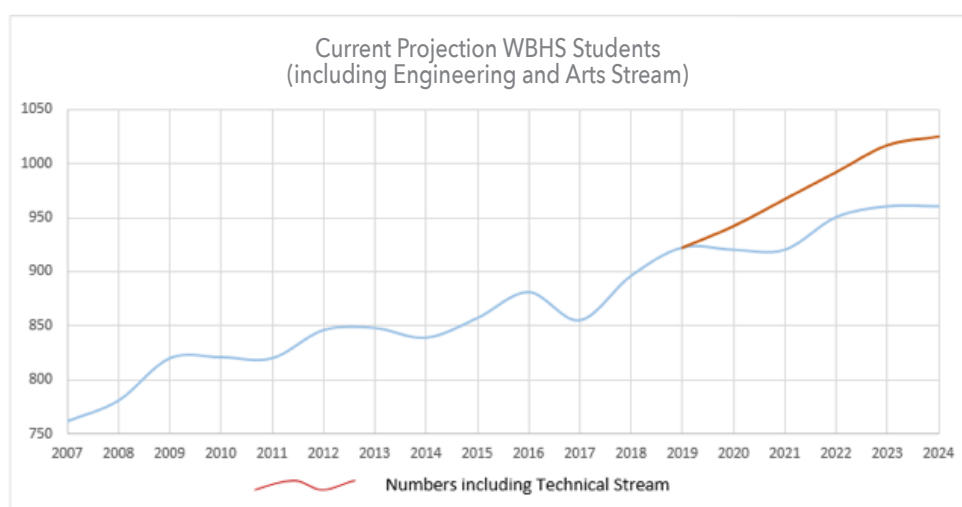
In 1981 Wynberg Boys' High relocated to our current campus to the then newly completed building designed to comfortably accommodate a student body of 450 boys. Since moving and despite the number of students increasing to over 900, very little expansion of teaching and learning facilities has been undertaken.

As one of the original Model C schools, demand for places increased dramatically post 1991, and in a committed approach to encouraging diversity, the School Governing Body instituted a phased increase in Grade 8 enrolments annually. Increased annual demand, and our reluctance to turn away boys likely to make a positive contribution to the school and derive the full benefits of a Wynberg education, has seen our Grade 8 intakes swelling to more than 210 a year since 2017. This incremental growth sees our student complement now more than double the original number the buildings were intended to accommodate.

Table and Graph: Increasing Pupil Numbers since 2007

Wynberg Boys' High School

Year	With Technical Stream	Size of School	Number in Matric
2007		762	148
2008		781	140
2009		820	156
2010		821	154
2011		820	148
2012		846	158
2013		848	178
2014		839	147
2015		857	150
2016		881	179
2017		855	148
2018		896	163
2019	922	922	162
2020	942	920	161
2021	967	920	170
2022	992	950	205
2023	1017	960	205
2024	1025	960	205



TRANSFORMATION AT WYNBERG



The WCED considered Wynberg, recognised as a leading SA school in transformation with consistent top level academic performance, as the ideal pilot for introducing Technology and Technical Subjects.

With Grade 10 Electronics introduced as a subject in 2018, all students subsequently in Grade 8 and 9 are taught Technology by teachers qualified in the subject.

Technology is an introductory course to those on offer in the Engineering and Design Faculty from Grade 10 - Grade 12, and provides the students with life-long basic technical skills. As a result, every student attending Wynberg stands to benefit from the new Engineering and Design Faculty, 55% of those students being persons of colour.

Almost immediately after the announcement of the new curriculum, Industry, inspired and citing the current shortage of technical skills in the workplace, approached WBHS to get involved to expand the project further. Championing the construction of a new academic wing to provide specialist teaching spaces designed for the 4th Industrial Revolution, the new Engineering and Design Faculty delivers essential teaching space to match the expanded curriculum and student numbers.

With the Technology and Technical skills gained in this Faculty, many doors will open to the students – scholarship and bursary opportunities for further studies, artisan work placement programmes, transference of skills and knowledge through holiday job shadow programmes, or implementing the skills they have learned to open their own business. The wide-reaching impact of the new Engineering and Design Faculty will be vast.

The vocational stream would operate from technical workshops, outside of school hours under the auspices of the Constantia Wynberg Education Sharing Initiative (CWESI), the adult night school already operating from Wynberg.

Holiday courses run from the new Engineering and Design Faculty would also be offered to learners from disadvantaged communities wanting to acquire technical skills, with the possibility of identifying deserving boys who might eventually be invited to join Wynberg's technical stream.

Wynberg currently has 123 students on scholarship with a further 7% of families currently qualifying for fee rebates. Effectively 20% of our student body are subsidised annually in one form or another.

- 71 Scholarships funded by Wynberg Boys' High School.
- 52 Individual Scholarships funded by benefactors and foundations.

Pupil Breakdown 2020

POPULATION GROUP	GR 8	GR 9	GR 10	GR 11	GR 12	TOTAL
Black/African	17	22	16	13	14	82
Coloured	80	77	85	70	62	374
Indian/Asian	8	12	14	9	11	54
Other	9	2	2	2	5	20
White	84	101	91	68	67	411
Total	198	214	208	162	159	941

PROPOSED CAMPUS UPGRADES



Fees paid by parents are used to meet the operational needs of the school, but at the same time it is essential that we accumulate sufficient funds to allow for major capital expenditure to build into the future.

While we continue to fundraise internally, appeal for financial contributions from Old Boys, and secure corporate sponsors for events and activities, it is imperative that we engage and partner with donors and funders for assistance.

Capital Works Projects

During 2016 Wynberg staff engaged in workshops to create **Vision 2021** with six key focus areas:

- Innovative Education
- Modern Facilities
- Diversity & Inclusivity
- Sustainability
- The Wynberg Brand
- The Wynberg Ethos

Targeting **modern facilities** across all four of our pillars of Academics, Culture, Service & Sport, the following projects were identified to enhance our excellence:

- Introduction of an Engineering & Design Faculty
- Expansion and upgrade of the Creative and Visual Art Department
- Additional Teaching Spaces
- Modernising Existing Teaching Spaces
- Upgrading Sports Facilities

Engineering and Design Stream

Recognising a shortage in various identified skills within the industrial sector and a lack of learner proficiency to pursue these in tertiary education, the WCED presented Wynberg with a discussion paper, Guidelines for the Implementation of Technology and Technical Subjects.

While Wynberg has, since 2006, offered the popular subject Engineering, Graphics and Design (EGD), we're further aligning ourselves with the new curriculum by introducing additional subjects:

- Electrical Engineering (Electronics), introduced in 2018
- Civil Engineering (Construction), introduced in 2020
- Automotive Engineering (TBC), to be introduced in 2021
- Digital Electronics, to be introduced in 2022

WBHS engaged with architects and other key role players to devise a strategy for a three-pronged approach to introduce an Academic, a Technical, and an Adult Vocational stream into the curriculum.

Introducing an Engineering and Design stream provides both Wynberg students and those attending CWESI, with opportunities of real-life work experience as well as entrepreneurial training. The introduction of this model supports youth development, adult education, job creation and the provision of much needed technical skills in South Africa.

Additional Grade 10 students may be enrolled toward completing the National Senior Certificate through the Engineering and Design stream, provided they can cope academically with the programme, an opportunity Wynberg Boys' High School would keenly offer.

THE DEPARTMENT OF VISUAL AND CREATIVE ARTS

The top floor of the Engineering and Design Faculty will be home to the Department of Visual and Creative Arts and will include an exciting new space, named The Studio, for creation and display of artwork.

Visual and Creative Arts, which develop invaluable lateral thinking and problem solving skills, are growing in popularity as subjects at Wynberg. The addition of The Studio, new modern art rooms, theory rooms, and offices, will offer additional possibilities for exhibitions, presentations and other related activities.

A spacious studio is important to give the boys a comfortable area to explore contemporary forms of art such as installations and mixed media, which can demand a broad spatial canvas.

We also intend opening The Studio to the broader community by having a resident artist, providing a creative space for a person who would otherwise struggle to gain recognition. The Studio will give our learners the real life experience of a working studio.

Positioning the Visual and Creative Arts practical rooms and The Studio away from the hustle and bustle of the main school buildings will allow our budding young artists to immerse themselves in their artwork in a space conducive to creativity.

The Studio will display the work of current art students and Wynberg Old Boy artists with the intention of demonstrating to students that a successful career in Art is an achievable reality.

The construction of this exciting new facility is included in the second phase of the Engineering and Design Faculty, commencing in February 2020 to be completed in time for the 2021 academic year.



Architect's 3D rendering





PROJECT COSTINGS



There are 2 phases to this project.

PHASE 1

**Lower Ground
and Ground Floor
R7 808 623**

Start Date: 14 June 2019

Completion Date: 14 December 2019

- 4 Classrooms
- 3 Workshops
- 1 Office
- 1 Storeroom
- 1 Undercover Courtyard

Total Budget - R7 808 623

PHASE 2

**1st Floor and
New Build
R21 392 612**

Start Date: 01 February 2020

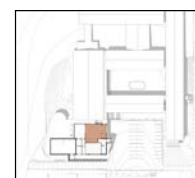
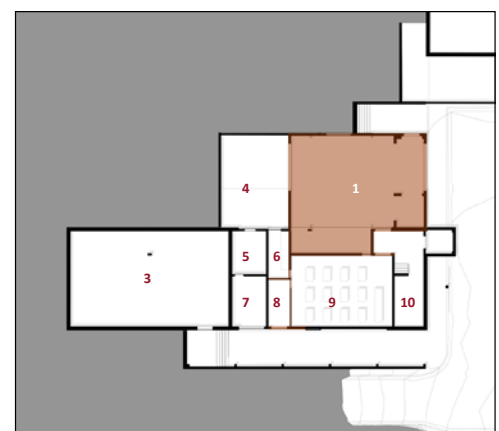
Completion Date: 14 November 2020

- 4 Classrooms
- 2 Workshops
- 6 Offices
- 1 Art Studio
- 2 Storerooms
- Lift for disabled access

Total Budget - R21 392 612

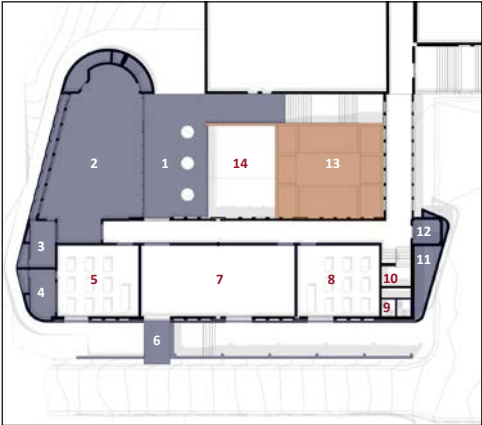
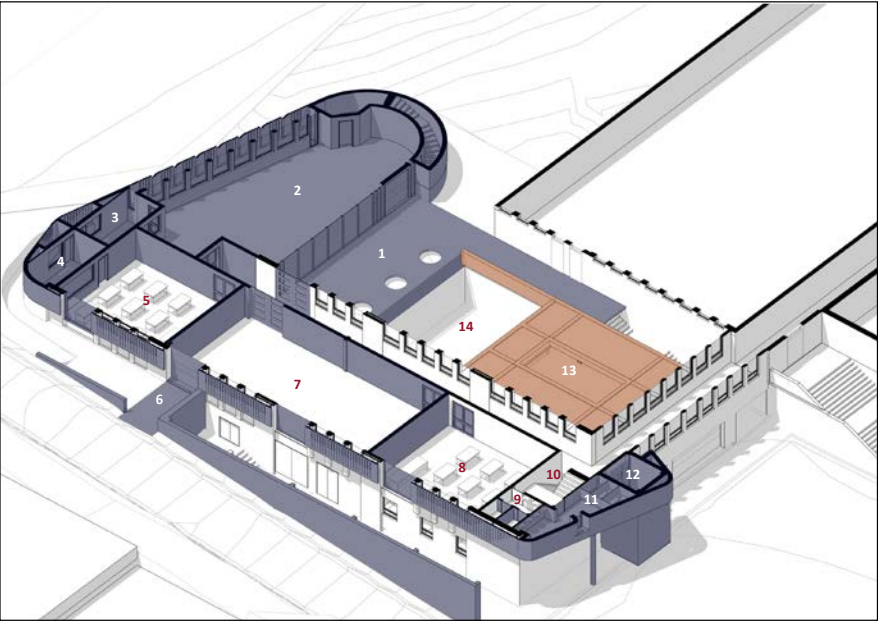
In addition, there are costs associated with a new build that are not included, such as fittings and fixtures, landscaping etc.

PHASE 1 | Lower Ground Floor (completed December 2019)



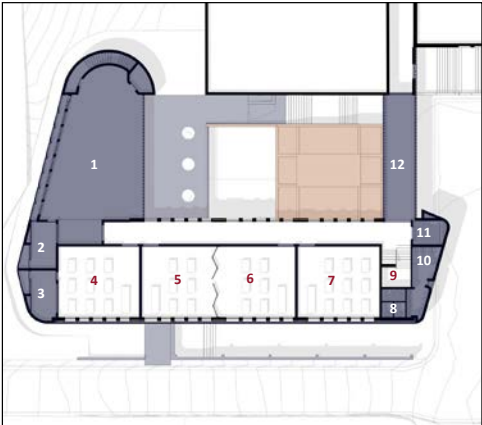
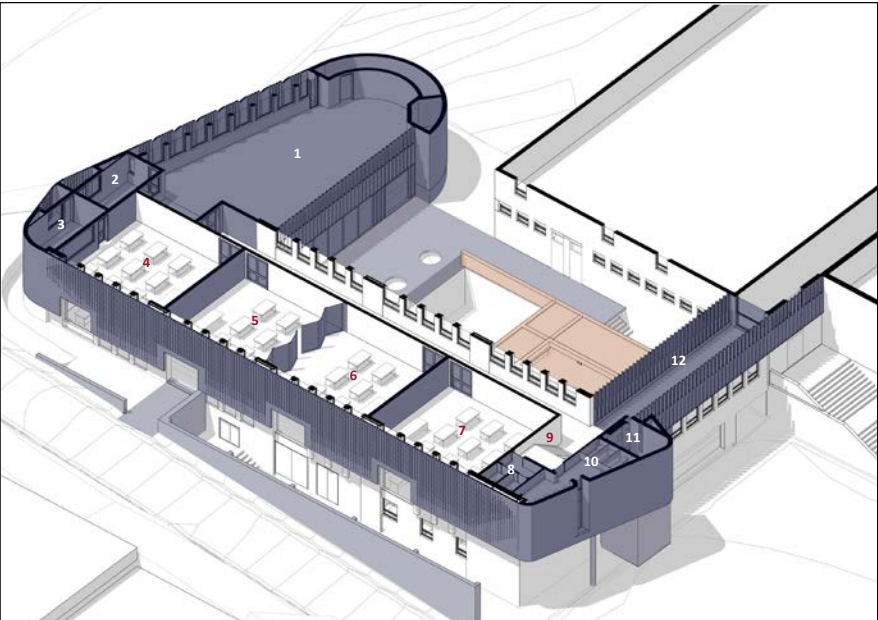
- 0 1 2 5 10 20
- 1 - WORKSHOP 1
 - 2 - DELIVERY CORE
 - 3 - STORE
 - 4 - COURTYARD
 - 5 - SWITCH ROOM
 - 6 - OFFICE
 - 7 - TRANSFORMER ROOM
 - 8 - STORE ROOM
 - 9 - CLASSROOM
 - 10 - CIRCULATION

PHASE 2 | 1st Floor (partially completed November 2019)



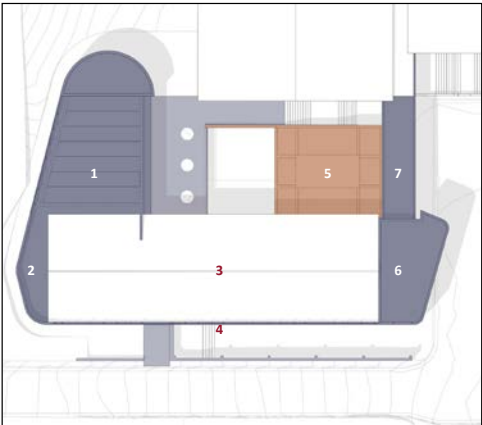
1 -	UPPER COURTYARD	11 -	ABLUTIONS
2 -	WORKSHOP 2	12 -	DELIVERY CORE
3 -	OFFICE 2	13 -	WORKSHOP ROOF
4 -	OFFICE 3	14 -	COURTYARD
5 -	CLASSROOM 2		
6 -	DELIVERIES		
7 -	WORKSHOP 3		
8 -	CLASSROOM 3		
9 -	STAFF WC		
10 -	CIRCULATION		

PHASE 2 | 2nd Floor



1 -	ART ROOM	11 -	DELIVERY CORE
2 -	OFFICE 4	12 -	NEW BRIDGE
3 -	OFFICE 5		
4 -	CLASSROOM 4		
5 -	CLASSROOM 5		
6 -	CLASSROOM 6		
7 -	CLASSROOM 7		
8 -	STAFF WC		
9 -	CIRCULATION		
10 -	ABLUTION		

PHASE 2 | Roof / Overview



1 -	NEW WORKSHOPS & ART BLOCK
2 -	NEW OFFICES
3 -	EXISTING ROOF
4 -	NEW FACADE
5 -	NEW WORKSHOP
6 -	NEW ABLUTION BLOCK
7 -	NEW BRIDGE
8 -	NEW DELIVERY CORE

IMPLEMENTATION PLAN



In 2018 we introduced the first engineering subject, Electronics, and as instruction space becomes available additional subjects will be introduced.

From 2020 more than ninety students in Grades 10, 11 and 12 are taking either Electronics or Civil Construction.

Once space becomes available, a third subject will be introduced, with all three subjects catering

to approximately sixty students per grade, or one hundred and eighty students in total. With approximately half the Grade 10 intake from within Wynberg, the balance will be new arrivals adding numbers to the total student complement from 2021.

For the Engineering and Design Faculty to be fully operational we require three workshops and three additional classrooms. These will be modern in design and environmentally friendly in line with Wynberg's strategic sustainability objectives.

HOW TO GET INVOLVED

1. Financial Assistance

- a. **Donation to the building fund**
(Section 18A Certificates available)
- b. **Provision of Scholarships**

2. Professional Services & Mentorship

Particularly in, but not restricted to, Construction and Health & Safety.

3. Material Donations

- a. **Building supplies** (e.g. paint brushes, ready-mix concrete, bricks, roof tiles etc.)
- b. **Soft furnishings** (flooring, blinds etc.)
- c. **Plumbing and bathroom supplies**
- d. **Electrical Supplies**
- e. **Paving**
- f. **Landscaping**
- g. **Signage**
- h. **Equipment for classrooms**

Donor Recognition

All cash as well as donations in kind or services will be inscribed on the Donor Recognition Board in the Engineering and Design Faculty.

Naming Donor - Tier 1

R20 Million secures the donor naming rights to the entire building in perpetuity.

Naming Donor - Tier 2

R5 Million secures the donor naming rights to a specific department within the faculty:

- Department of Construction
- Department of Electronics
- Department of Visual and Creative Arts
- Department of Automotive Engineering.

Platinum Donor

R1 - R5 Million

Wynberg Blue Donor

Up to R1 Million

All donations to this project will be gratefully accepted by the Supera Moras Trust.
www.superamorastrust.com



SUPERA MORAS TRUST AND TAX DEDUCTABILITY OF DONATIONS

The Supera Moras Trust was established by a number of Wynberg Old Boys in 2008.

Its purpose is to provide a vehicle for donations to enhance the education of young men attending Wynberg Boys' High School in Cape Town.

Any prospective donation tax benefit accruing to the donor will be regulated by the country in which the donations are made.

The Supera Moras Trust is a registered Public Benefit Organisation (PBO) with the South African Revenue Service (SARS) and enjoys S18A status which permits the issuing of donation tax certificates to

South African tax-payers, who may donate up to 10% of their net taxable income to the Trust without incurring donations tax. Tax certificates will be issued in respect of qualifying donations each year for inclusion in donors' tax returns.

Bequests from the estates of deceased persons in favour of Wynberg Boys' High School may also be exempt from the payment of estate duty in terms of section 4(h) of the Estate Duty Act, 45 of 1955. The stipulation by the donor to Wynberg Boys' High School is that they must state the donation is made: "To cover essential costs which include academic fees, boarding costs, books, uniforms and sporting apparel."

CONCLUSION

Wynberg Boys' High School student numbers have increased over the last 39 years with little physical expansion to our buildings. In line with the WCED guidelines regarding the introduction of an engineering stream, the Engineering and Design Faculty will contribute significantly towards expanding the building's original capacity.

It is with this in mind that we appeal for your assistance.

BANKING DETAILS

Wynberg Boys' High School

Standard Bank

Branch Code: 025309

Acc No: 07 169 122 7

Supera Moras Trust

Standard Bank

Branch Code: 025309

Acc No: 27 618 053 4

**Additional information may be obtained from the Headmaster, Mr Jan de Waal.
email: jdewaal@wbhs.org.za | Telephone: +27 21 761 2966**



Additional information may be
obtained from the Headmaster,

Mr Jan de Waal

email: jdewaal@wbhs.org.za

Telephone: +27 21 761 2966



Wynberg Boys' High School
Lovers' Walk, Wynberg 7800

Telephone: +27 21 797 4247

email: secretaries@wbhs.org.za

www.wbhs.org.za