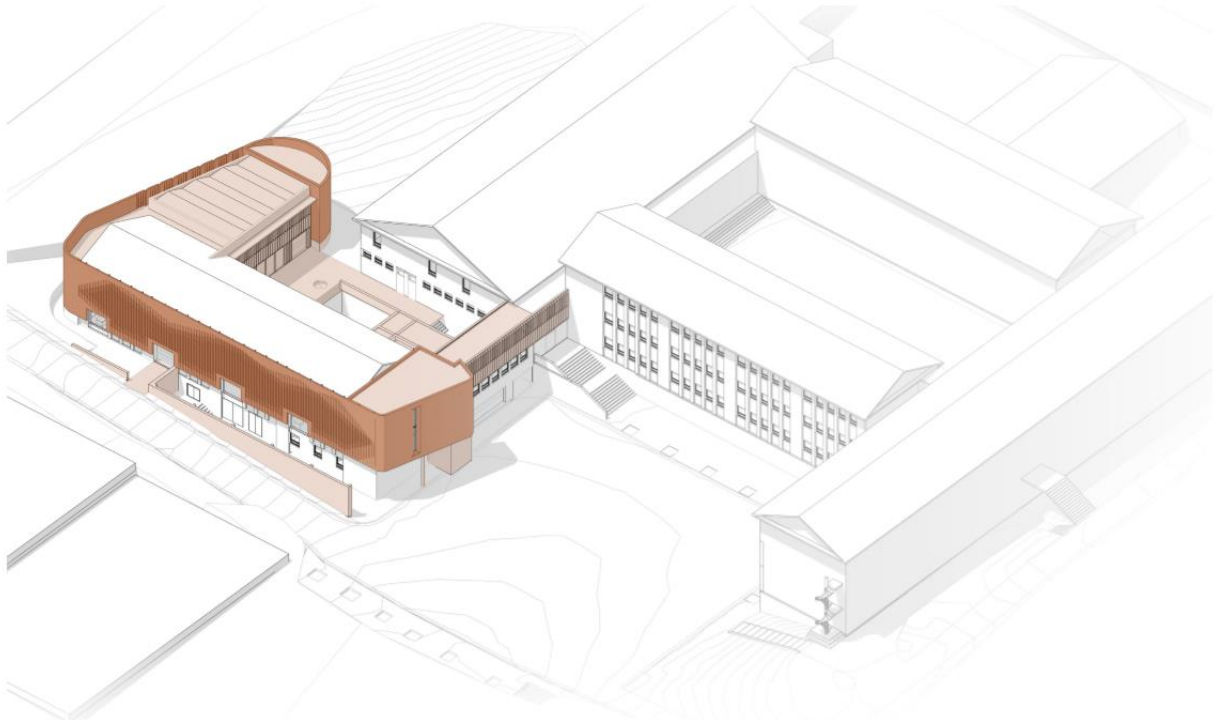


WYNBERG BOYS' HIGH SCHOOL
Creating a Pipeline of Quality Resources
ENGINEERING AND DESIGN FACULTY



SCOTT + PARTNERS
WBHS | ENGINEERING & DESIGN FACULTY

OVERVIEW +

Summary

Wynberg Boys' High School are introducing an Engineering and Design Faculty as envisaged in the Schools 2021 Vision Document, the first in a series of capital works projects identified by the school executive.

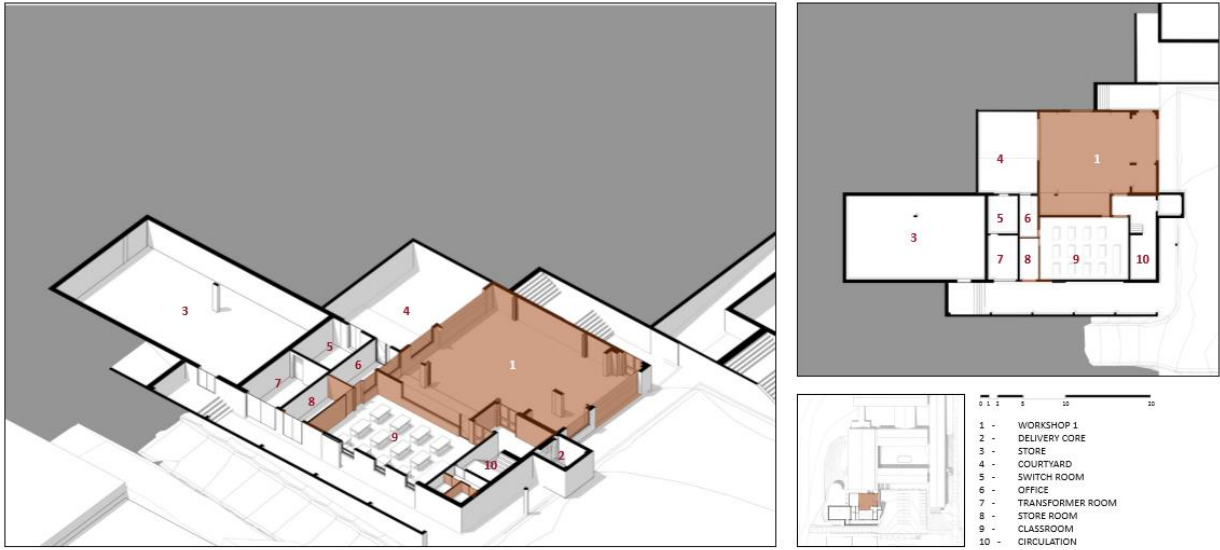
In order to maintain and improve upon the school's magnificent facilities and to continuously stay at the forefront of modern technologies in the classrooms, they have a 5-year, long term plan of projects for which additional funding is required.

They have managed to secure several large donations but still require an additional funding to complete the 2 phases.

Funds raised will be used to build additional classrooms and workshops to help cope with increased numbers and proposed upgrades in line with WCED (Western Cape Education Department) *Guidelines for the Implementation of Technology and Technical Subjects*.

The diagrams below give an overview of the proposed build and the two phases.

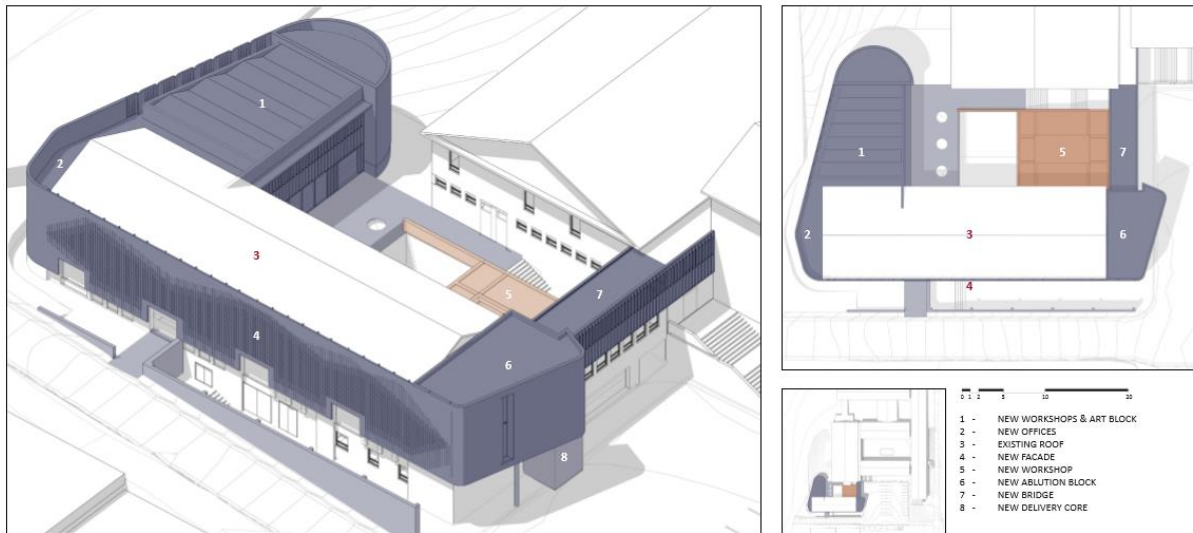
Engineering and Design Faculty: Phase 1



SCOTT⁺PARTNERS
WBHS | ENGINEERING & DESIGN FACULTY

LOWER GROUND FLOOR | PHASE 1

Engineering and Design Faculty: Phase 2



SCOTT⁺PARTNERS
WBHS | ENGINEERING & DESIGN FACULTY

OVERVIEW | PHASE 2



Background

Wynberg Boys' High School is a traditional, values-based boys' school that mentors young men by providing a wide range of educational opportunities in a stimulating, innovative and challenging environment.

Although steeped in tradition, Wynberg has a modern outlook and is proudly South African. Thriving on diversity, their ethos is brotherhood and a guiding principle 'never give up', reflects the school's motto '*Supera Moras*' – or 'overcome difficulties'.

As one of the oldest schools in the country, Wynberg are proud to remain at the forefront of education both in the use of technology and teacher development. Understanding that technology cannot replace quality teachers, Wynberg emphasises best practice toward academic excellence, particularly in Mathematics and Science.

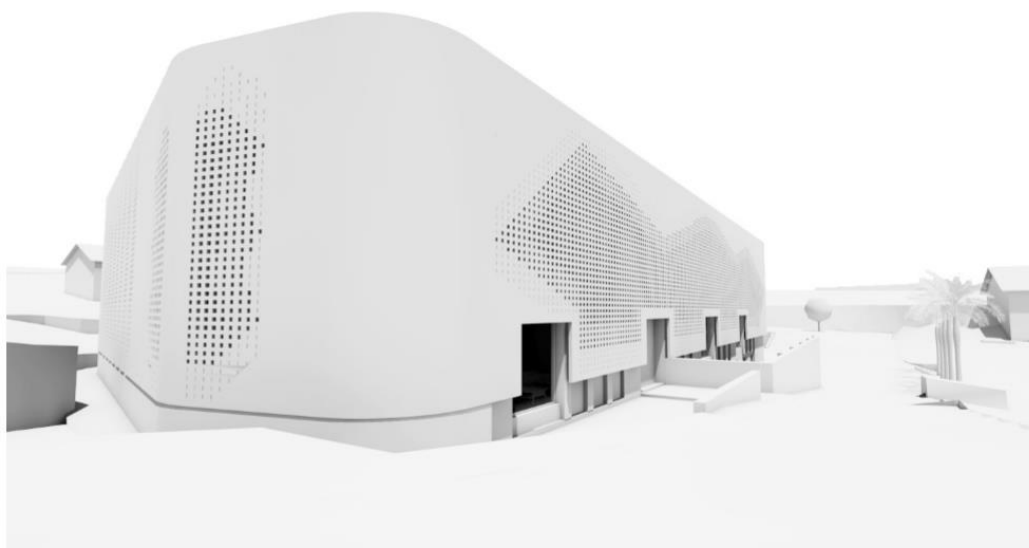
Whilst celebrating the successes of boys, the real achievement lies in offering a world-class education within a caring environment.

Wynberg moved onto the new campus in 1981 into a building designed to accommodate 450 students. Since moving, there has been very little expansion of teaching and learning facilities despite the number of learners increasing to over 900, almost double the intended number.

Post 1991 the demand for places at the school increased dramatically. In an effort to promote diversity a decision was taken at Governing Body level to increase the intake at Grade 8, first to 150 per grade and then in 2014 to 180 per grade and in 2017 to 210 per grade.

This increase in numbers is due to demand and our reluctance to turn away boys who will make a positive contribution to the school and derive huge benefit from a Wynberg education.

Faced with the prospect of our last two intakes of 180 per grade exiting the school in 2017 and 2018 and being replaced by intakes of over 210, this immediately increases our student numbers from 855 in 2017 to 896 in 2018. This upward trend will then continue for the next 4 years with numbers stabilising at about 960 students in 2021, well over double the original number the buildings were intended to accommodate.



SCOTT + PARTNERS
WBHS | ENGINEERING & DESIGN FACULTY

SCHEMATIC 3D



Transformation at Wynberg

Wynberg is profoundly grateful that today they can stand proud in knowing they helped lead the way in normalising race attitudes at school level in South Africa.

Since 2006 young men leaving Wynberg have never known segregation – the post 1994 ‘rainbow children’ have only experienced and benefited from the sophisticated teaching and highest-grade extra-mural facilities on offer at Wynberg.

Transformation, by its very nature is an on-going process, and at Wynberg there is a commitment to continue transforming the school to suit the multi-faceted face of South Africa. Wynberg is a school that welcomes diversity in all spheres: racial, social, cultural and religious. To celebrate and nurture this diversity, all policies in the school, through a consultative process, have been made more inclusive and have adapted to give everyone in the school community a voice.

These changes in policy have resulted in fairer representation in recruitment of staff, and admissions of boys into the school to reflect more equitably the demography of the Western Cape South Africa.

The changes in policy have also seen a commitment to recognising, celebrating and honouring different religious practices, diverse cultural expressions and many talents that boys have to offer. This inclusive policy is the catalyst for transforming Wynberg into a harmonious space where the dignity of every person is recognised and honoured. To that end, the transformation process at Wynberg will continue.

Pupil Breakdown 2019 as at April 2019

	Black	Coloured	Indian / Asian	White	Other	TOTAL
Grade 8	23	75	12	100	3	213
Grade 9	16	85	13	90	4	208
Grade 10	15	70	11	71	3	170
Grade 11	14	62	11	69	5	161
Grade 12	16	60	3	82	1	162
Total	84	352	50	412	16	914

Proposed Campus Upgrades

Fees paid by parents are used to meet the operational needs of the school, but to ensure they build enough funds for major capital expenditure, it is imperative that there is an appeal to funders for assistance, all the while continuing to fundraise and appeal for financial contributions from the alumni of Wynberg and corporate sponsors, to ensure they continue to build on the proud traditions of Wynberg Boys’ High School.

2021 Vision - 5 Year Capital Works Projects

During 2016 the staff body engaged in a program to create a vision for the school for 2021 and identified the Wynberg 2021 Strategy, out of these the following 6 key focus areas were identified:

- Innovative Teaching
- Modern Facilities
- Interactive Classrooms
- Social Cohesion
- The Wynberg Brand
- The Endless Chain

One of these **key focus areas** is Modern Facilities, where the schools excellence is enhanced by the development of modern facilities across all four of our pillars, Academic, Culture, Service & Sport. In line with this strategy the following projects, amongst others, were identified:

- Introduction of an Engineering and Design Faculty
- Additional Teaching Spaces
- Modernising Existing Teaching Spaces

Engineering and Design Stream offering Technical subjects

Due to a lack of learners becoming proficient in various identified skills within the industrial and tertiary educational sector, the WCED presented the school with a discussion paper *on Guidelines for the Implementation of Technology and Technical Subjects*.

Aligning themselves with this thinking, Wynberg have since 2006 offered the popular subject EGD (Engineering, Graphics and Design) and introduced Electronics in 2018, with Civil Engineering (Construction) being introduced in 2020. The 3rd elective subject, will be introduced in 2021.

- Electrical Engineering (Electronics)
- Civil Engineering (Construction)
- Automotive Engineering (TBC)

WBHS engaged with architects and other key role players to devise a strategy to introduce a three-pronged approach, by introducing an Academic, Technical and Adult Vocational stream into their curriculum.

The vocational stream would operate out of technical workshops, outside of school hours under the auspices of CWESI, the adult night school. Holiday courses would also be offered to learners wanting to acquire technical skills.

Introducing an Engineering and Design stream will provide Wynberg students with opportunities of real-life work experience as well as entrepreneurial training. The introduction of this model will support youth development, adult education, job creation and the provision of much needed technical skills in South Africa.



Investigations into the feasibility of accepting additional Grade 10 learners into the school has been done and provided they can cope academically with the current school program, we would like to afford them the opportunity to attend Wynberg Boys' High School. Holiday programs will run utilising these facilities to excite and uplift learners from disadvantaged communities, with the possibility of identifying deserving learners that will eventually be invited to join WBHS technical stream.

Costings

There are 2 phases to this project.

Phase 1 – R5 850 434

Phase 2 – R23 350 801

In addition, there are cost associated with a new build that are not included, for example fittings and fixtures, landscaping etc.

Phase 1 – Lower Ground Floor ([see plan](#))

Start Date	14 June 2019
Completion Date	14 October 2019

- 1 Classroom
- 1 Workshop
- 1 Office
- 1 Store room
- 1 Undercover Courtyard

Total Budget – R5 850 434

Phase 2 – Ground, 1st and 2nd Floor ([see plans](#))

Start Date	15 January 2019
Completion Date	14 November 2020

- 7 Classrooms
- 3 Workshops
- 6 Offices
- 1 Art Room
- 2 Store Rooms

Total Budget – R23 350 801

Implementation Plan

In 2018 Wynberg introduced the first technical subject, Electronics, and as instruction space becomes available will introduce the additional subjects. This year they have a minimum of 26 boys taking Electronics.

The projected number taking technical subjects is approximately 60 per grade (3 subjects) in grades 10, 11 and 12, totalling 180 students made up of approximately half from within Wynberg Boys' and the other half being new entrants to Wynberg at grade 10 level. This means an



additional 100 students over and above the 960 mentioned above, that will be attending Wynberg Boys High by 2022.

In order for this Engineering and Design Faculty to be fully operational they require three workshops and three additional classrooms. The proposal is to reconvert the former woodwork and metalwork workshops, which have been turned into ordinary classrooms when these subjects were phased out in 2005. These classrooms are architecturally and structurally designed as workshops and it is therefore easier to relocate the current classes to a new venue. Additional classrooms and workshops will be required to cope with the increasing numbers.

All additional classrooms built at Wynberg will be modern in design and environmentally friendly in line with our strategic objectives.

How To Get Involved

There are several ways of getting involved with assisting

1. Financial Assistance
 - a. Donation to the building fund (Section 18A Certificates available)
 - b. Scholarship
2. Professional Services (particularly in Construction and Health and Safety)
 - a. Professional Services
 - b. Mentorship
3. Material Donations
 - a. Building supplies (e.g. paint brushes to ready mix concrete, bricks, roof tiles etc)
 - b. Soft furnishings (flooring, blinds)
 - c. Plumbing and bathroom supplies
 - d. Electrical
 - e. Paint
 - f. Paving
 - g. Landscaping
 - h. Signage
 - i. Equipment for classrooms

Conclusion

Wynberg Boys' High School learner numbers have increased over the last 36 years in the current facility with little physical expansion. In line with the WCED proposal with regards to the introduction of a technical stream, this will contribute towards more than doubling the building's original capacity.

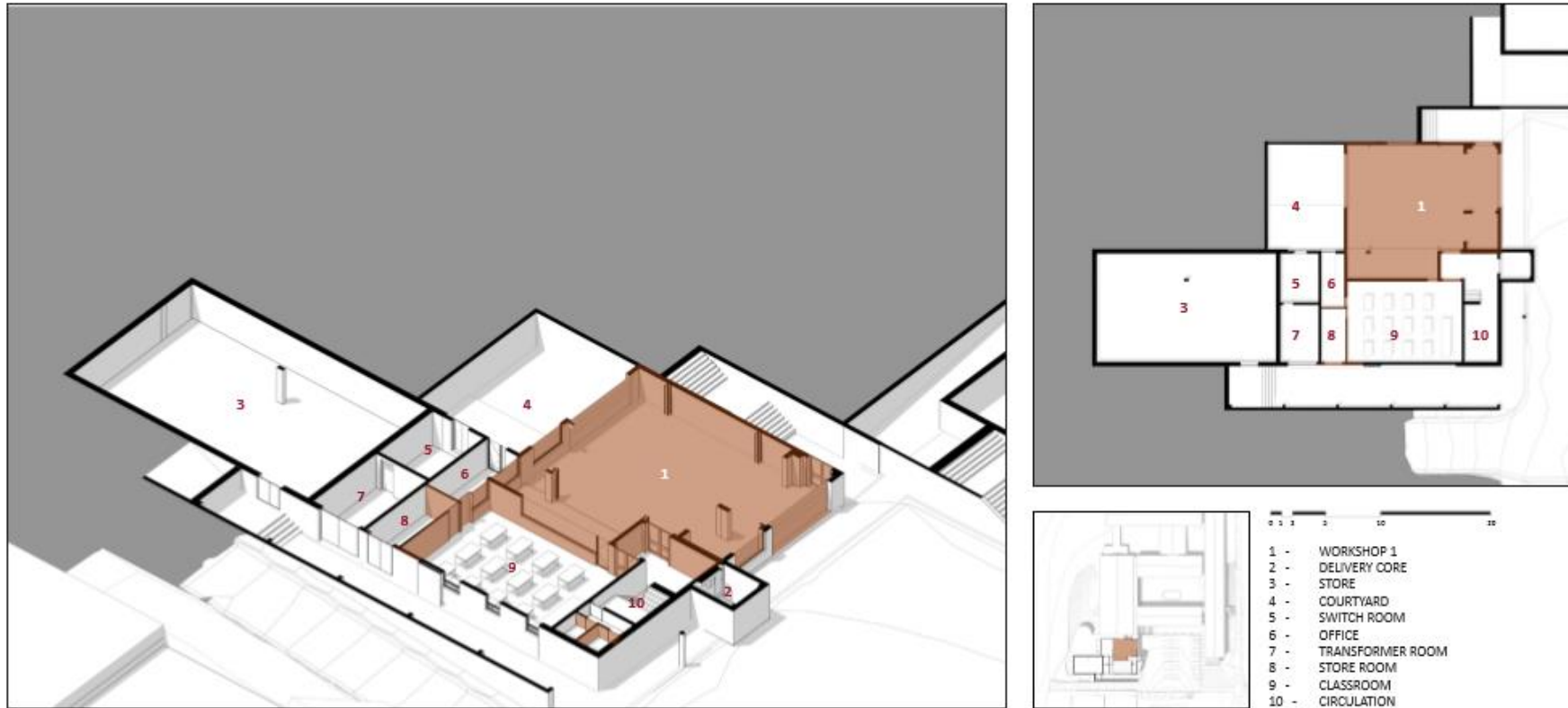
It is with this that we are appeal for financial assistance.

Any addition information required can be obtained from the Headmaster Mr Jan de Waal at jdewaal@wbhs.org.za or 021 7612966

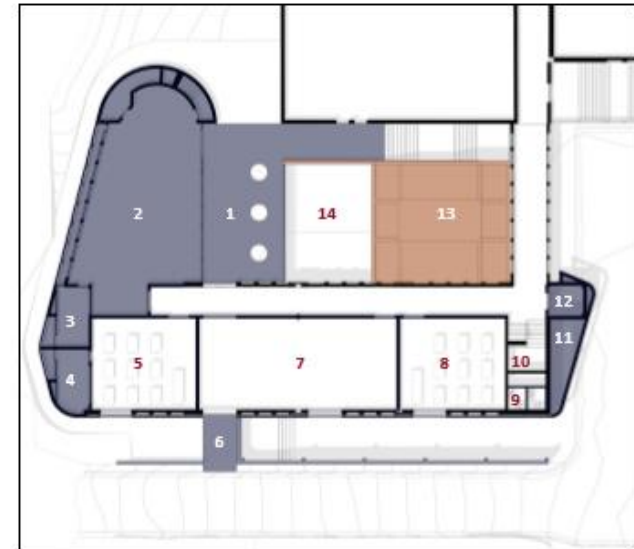
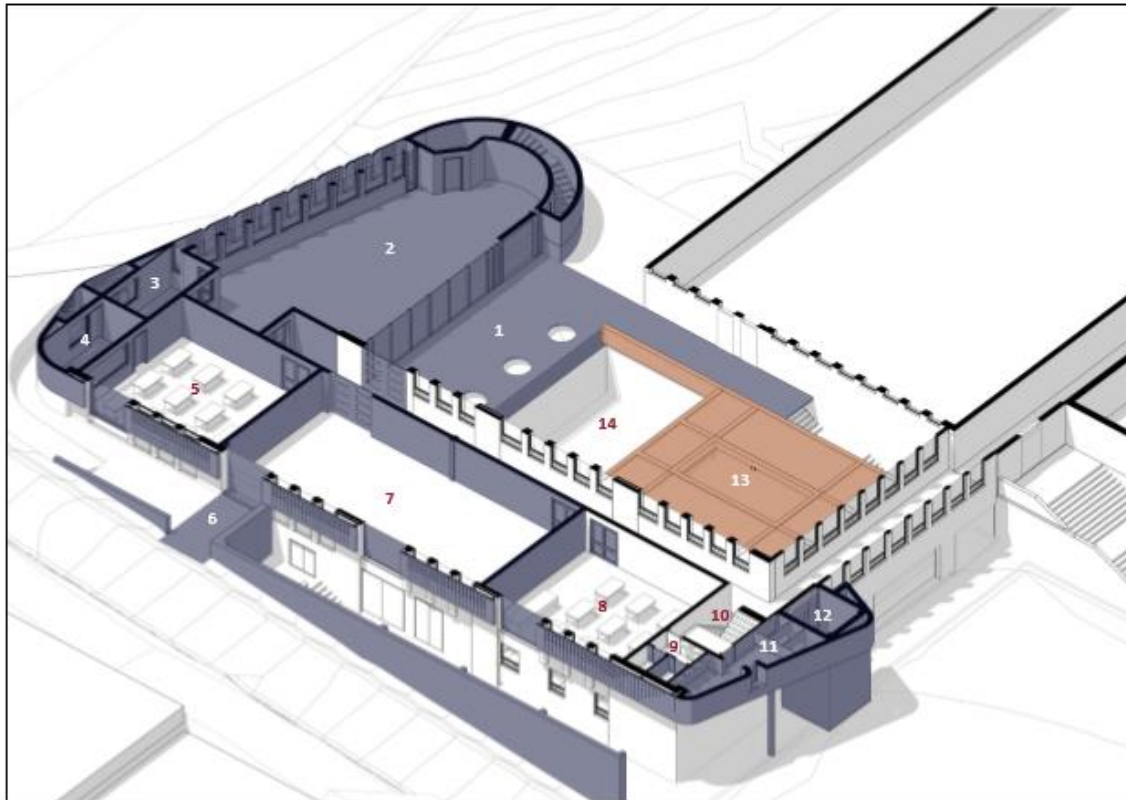


2019 Plans to accommodate new Engineering and Design Faculty

Lower Ground Floor

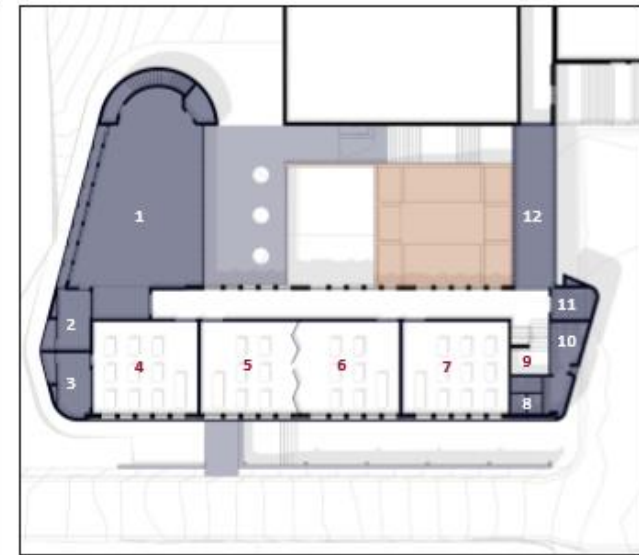
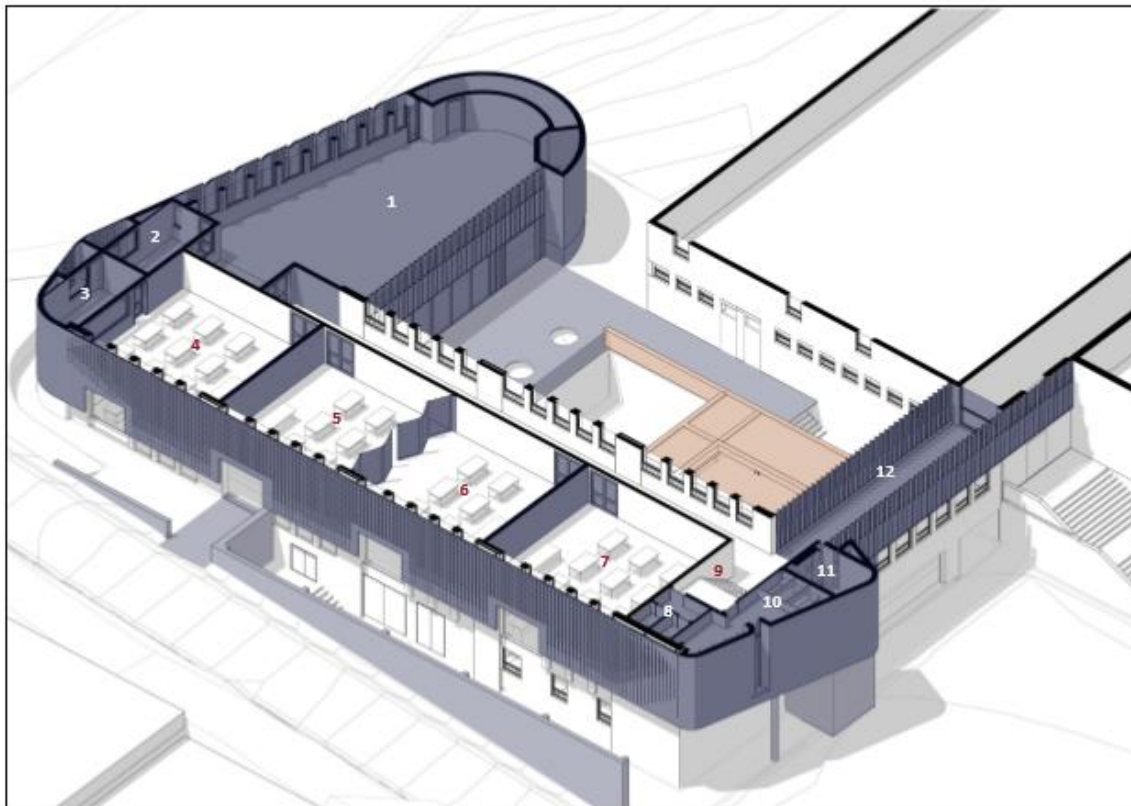


Ground Floor



- | | |
|---------------------|--------------------|
| 1 - UPPER COURTYARD | 11 - ABLUTIONS |
| 2 - WORKSHOP 2 | 12 - DELIVERY CORE |
| 3 - OFFICE 2 | 13 - WORKSHOP ROOF |
| 4 - OFFICE 3 | 14 - COURTYARD |
| 5 - CLASSROOM 2 | |
| 6 - DELIVERIES | |
| 7 - WORKSHOP 3 | |
| 8 - CLASSROOM 3 | |
| 9 - STAFF WC | |
| 10 - CIRCULATION | |

First Floor



0 5 10 20

- | | |
|-----------------|--------------------|
| 1 - ART ROOM | 11 - DELIVERY CORE |
| 2 - OFFICE 4 | 12 - NEW BRIDGE |
| 3 - OFFICE 5 | |
| 4 - CLASSROOM 4 | |
| 5 - CLASSROOM 5 | |
| 6 - CLASSROOM 6 | |
| 7 - CLASSROOM 7 | |
| 8 - STAFF WC | |
| 9 - CIRCULATION | |
| 10 - ABLUTION | |